



GAT MONTHLY MEMBERSHIP PROGRESS REPORT

Results as of: 9/30/2022

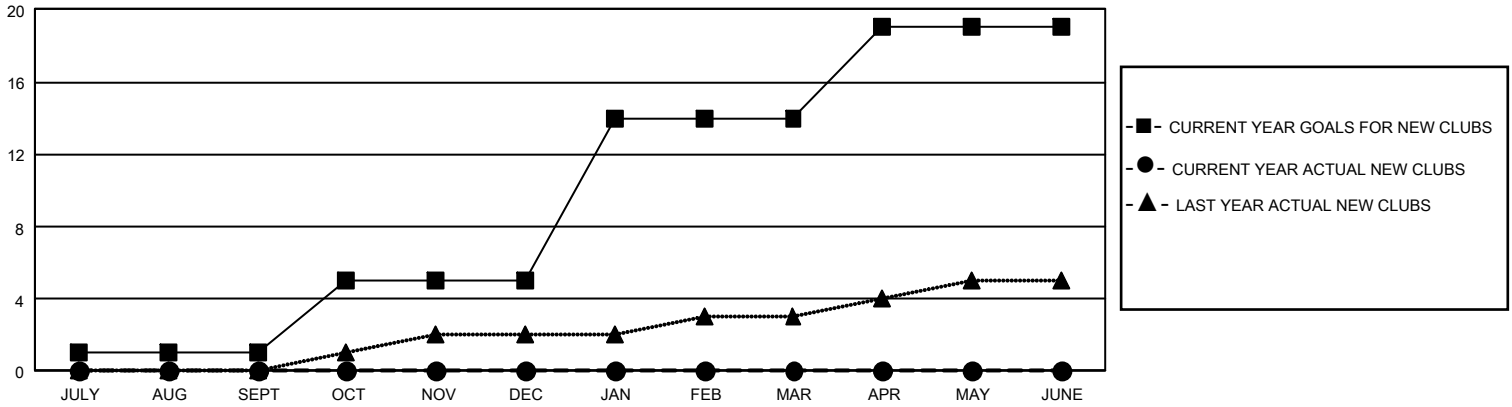
GMT Constitutional Area 3, Group G

REPORT DOES NOT INCLUDE CLUBS IN UNDISTRICTED AREAS.

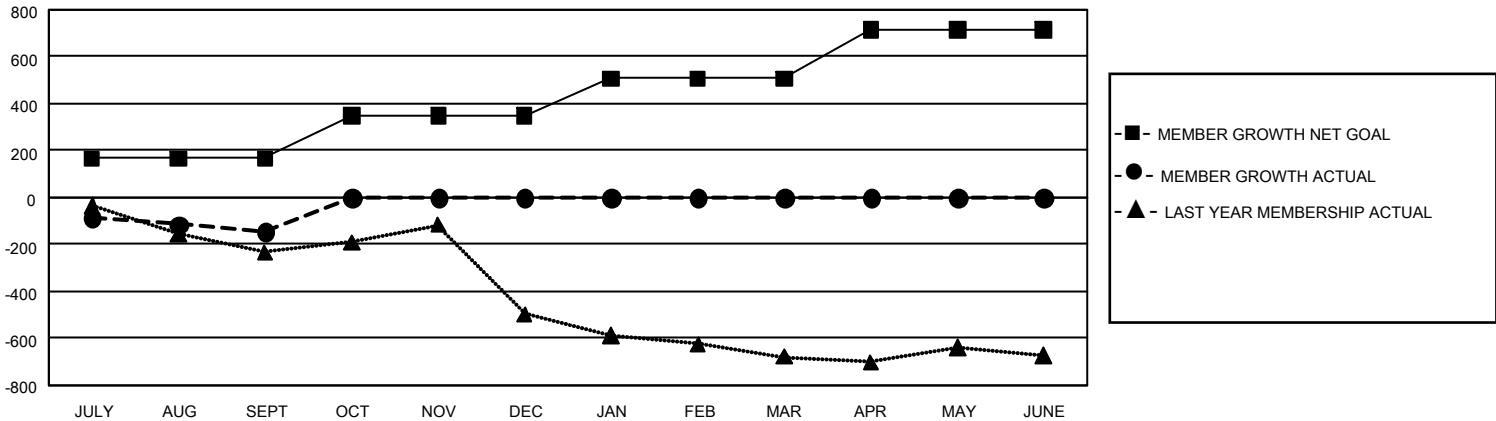
Clubs			
RESULTS FOR 2022-2023			
QUARTER	NEW CLUB GOAL	NEW CLUBS	DROPPED CLUBS
JULY/AUG/SEPT	3	0	6
OCT/NOV/DEC	12	0	0
JAN/FEB/MAR	27	0	0
APR/MAY/JUNE	15	0	0

Members			
RESULTS FOR 2022-2023			
QUARTER	MEMBER GROWTH NET GOAL	MEMBER GROWTH ACTUAL	DROPPED MEMBERS ACTUAL (including transfers)
JULY/AUG/SEPT	167	224	326
OCT/NOV/DEC	182	0	0
JAN/FEB/MAR	158	0	0
APR/MAY/JUNE	206	0	0

GOALS AND ACTUAL NEW CLUBS CUMULATIVE



GOALS AND ACTUAL MEMBERS CUMULATIVE



DROPPED CLUBS: 6	83 CLUBS OF 491 ADDED 1 OR MORE NEW MEMBERS	<u>GENDER DISTRIBUTION</u>	
		MALE 5,836 (53.59%) FEMALE 5,054 (46.41%) NON BINARY 0 (0.00%) PREFER NOT TO ANSWER 1 (0.01%)	TOTAL FAMILY UNIT MEMBERS 4,699 FAMILY MEMBERS PAYING HALF DUES 2,469
<u>DROPPED MEMBERS</u>		CLICK HERE FOR CUMULATIVE MEMBERSHIP DATA	
DECEASED 31 CLUB CANCELLED 8 OTHER 287 TOTAL 326			